

Line of Separation (LOS): Beef Feedlots

Example 1: Livestock Trailer is Outside the LOS

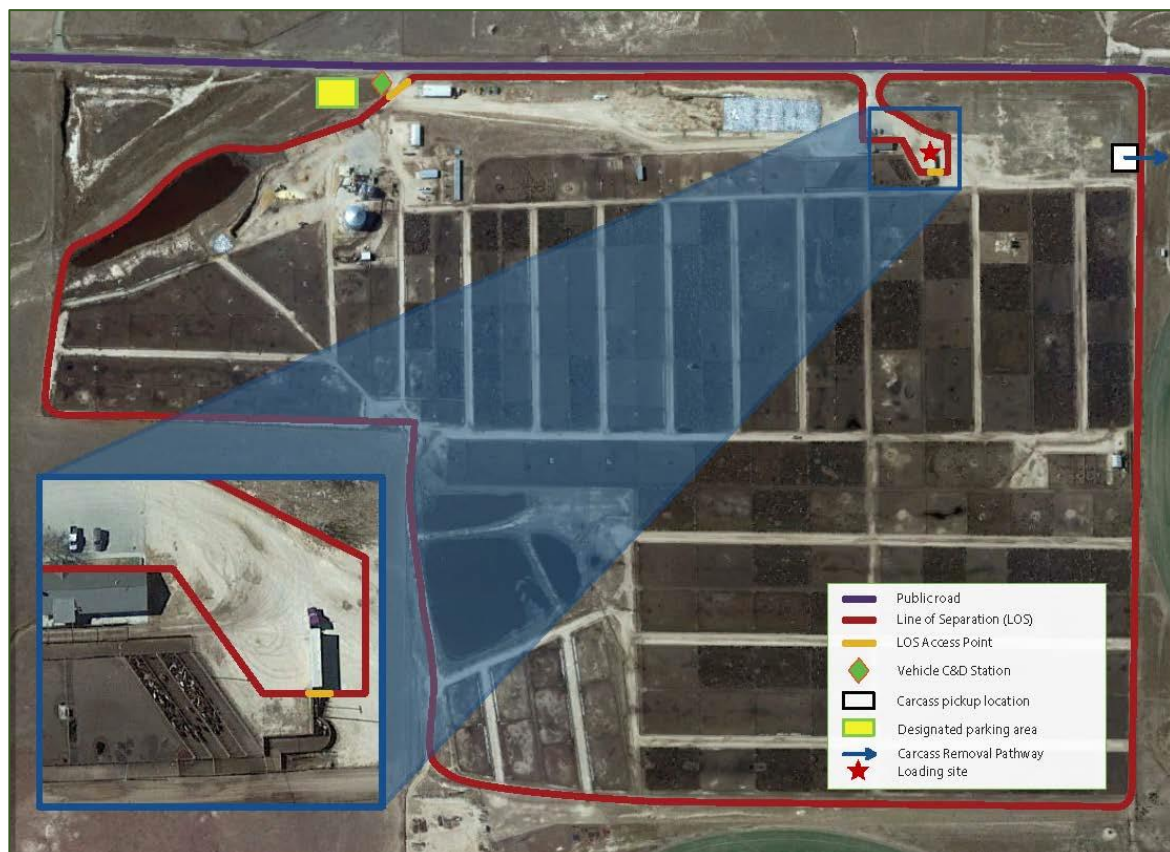
This example feedlot demonstrates where the layout and direct route to the loading site would allow the livestock truck to load or unload cattle without crossing the LOS. In this situation, less resources would be needed because exterior vehicle C&D would not be needed every time those vehicles came to the feedlot.

Feedlots need to maintain the loading site as an LOS Access Point for cattle movement and have protocols that prevent FMD virus introduction. The LOS Access Point could be established at a variety of places within the loading area depending on truck style, loading site design, and preferences of the feedlot and livestock transporter.

Unless they remain in the cab, the transporter would perform all cattle loading activities from the truck/trailer side of the LOS and individuals working on the feedlot would perform all other activities within the LOS. If the same loading site will be used for incoming cattle, individuals working on the feedlot are responsible for cleaning and disinfecting the LOS Access Point at the loading site once the transporter and livestock truck/trailer leaves.

Here is a brief checklist to determine if a feedlot can utilize this option and minimize introduction of FMD virus from the livestock truck and driver:

- Loading site is adjacent to a public road and livestock truck does not enter feedlot to load cattle – OR –
- Drive path leading to the loading site does not pass close to susceptible animals
- Loading area does not slope towards animal housing or holding areas
- The driver is trained in proper protective gear donning, doffing, and disposal

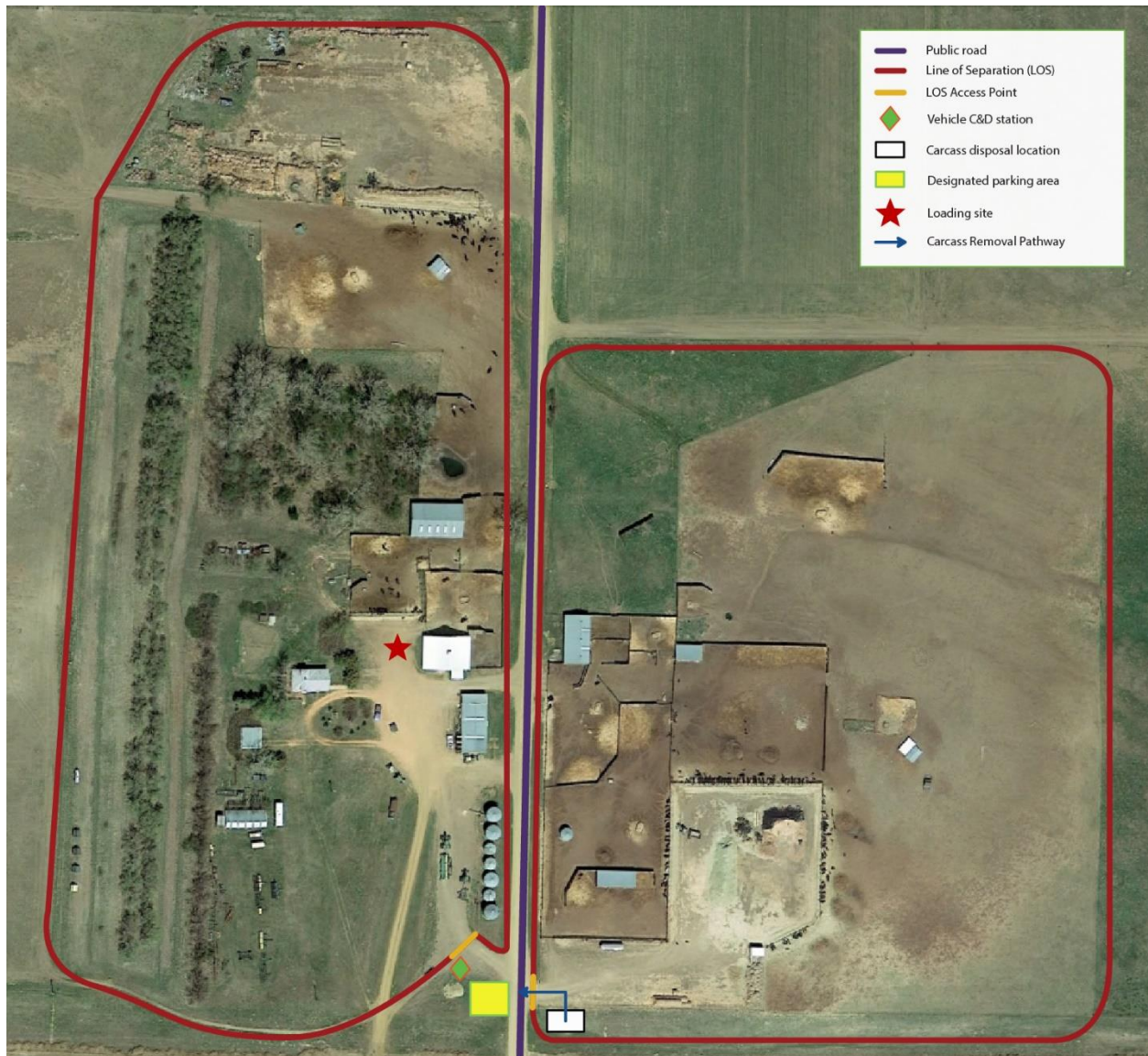


- The loading site can be established as a LOS Access Point (for cattle only) with signage, proper biosecurity steps posted, and all supplies required to meet the biosecurity steps
- Individuals working on the feedlot are trained in proper cleaning and disinfection protocols for the loading site
- Individuals working on the feedlot are trained in proper protective gear donning, doffing, and disposal

If this option is used it is important that:

- The off-site vehicle does not need to undergo exterior C&D because it is not crossing the LOS
- On-site vehicles are excluded from area where off-site vehicles park to load/unload
- Susceptible animals should not walk through this area unless loading out direct to slaughter
- Individuals working on the feedlot should not walk through this area
- If individuals working on the feedlot cross the LOS here, or at another location, they must re-cross the LOS to the feedlot side at an LOS Access Point in a biosecure manner.

Example 2: Vehicle Crosses the LOS



This option contains an example of a feedlot where the loading site is within the LOS (blue arrow). This would require a livestock truck undergo C&D at the LOS Access Point before crossing the LOS to limit FMD virus entry.

Truck/trailer, commodity truck, and transporter/driver, cross the LOS Access Point onto the cattle side of the LOS to load/unload cattle or commodities.

- C&D of vehicle required
- Biosecurity measures for driver exiting the cab